

Gold

Canada TSX-V: WHN



Westhaven Gold Corp

Exploring British Columbia's Newest Gold Belt

Company Overview

Westhaven is a gold-focused exploration company advancing the high-grade discovery on the Shovelnose project in Canada's newest gold district, the Spences Bridge Gold Belt. Westhaven controls 37,000ha (370km²) with four 100% owned gold properties spread along this underexplored belt. The flagship Shovelnose property is situated off a major highway, in close proximity to power, rail, large producing mines, and within commuting distance from the city of Merritt, which translates into low-cost exploration. These relatively underexplored volcanic rocks are highly prospective for epithermal style gold mineralization.

High-Grade Gold off a Major Highway in British Columbia

2018: 17.77m of 24.50 g/t Au and 107.92 g/t Ag

2019: 12.66m of 39.31 g/t Au and 133.11 g/t Ag

2020: 7.78m of 14.84 g/t Au and 39.40 g/t Ag

2021: 27.85m of 7.51 g/t Au and 83.94 g/t Ag

15.97m of 9.15 g/t Au and 27.43 g/t Ag

2022: 23.03m of 37.24 g/t Gold and 209.52 g/t Silver including
1.12m of 294 g/t Gold and 2,110 g/t Silver at the FMN Zone
3.13m of 45.23 g/t Au and 195.64 g/t Ag at the Alpine Zone

**2023: 12.00m of 39.42 g/t Au and 51.81 g/t Ag, including
6.20m of 73.51 g/t Au and 92.37 g/t Ag at surface at the Franz Zone**

Initial Maiden Resource at Shovelnose:

841,000 Indicated ounces at 2.47 g/t gold equivalent

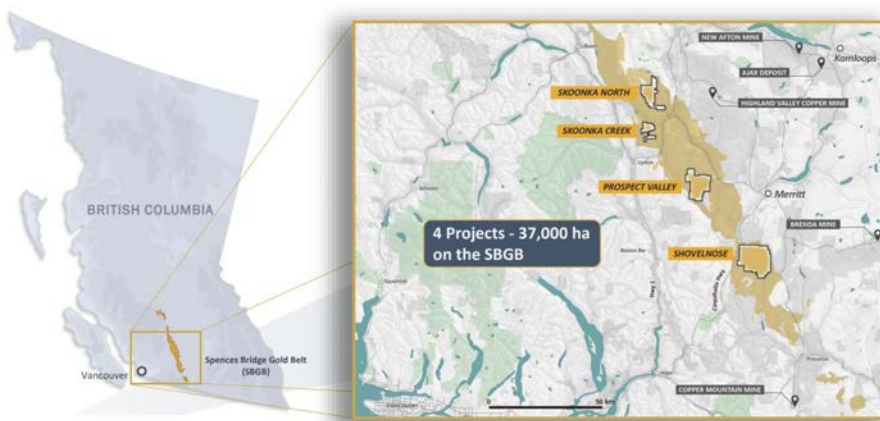
277,000 Inferred ounces at 0.94 g/t gold equivalent

95% Gold and 96% Silver recoveries in preliminary metallurgical test results, mineralization in non-refractory and amenable to recovery by a standard industry process flowsheet

District-Scale Potential: Large land package 100% owned 37,000ha 2.5% NSR on ~70,000ha

Location: Discovery ~5km off Major Highway – infrastructure: roads, power, people, operating mines

Unique Project Location



Low-Cost Exploration

- ≡ 2.5-hour drive from Vancouver
- ≡ 30-minute drive from Merritt
- ≡ 5km from the Coquihalla Highway
- ≡ Powerline on property
- ≡ Heavily logged, with forestry roads in place
- ≡ Year-around exploration



Directors & Management

Grenville Thomas	Chairman
Gareth Thomas	President & CEO, Director
Shaun Pollard	CFO & Director
Peter Fischl	Exploration Manager
Victor A. Tanaka	Director
Hannah McDonald	Director
Sean Thompson	Vice President Corporate Development & Investor Relations
Paul McRae	Independent Director

Latest Announcements

01/17/23 Westhaven Drills 6.20 Metres of 73.51 g/t Gold and 92.37 g/t Silver Within 12.00 Metres of 39.42 g/t Gold and 51.81 g/t Silver at the Franz Zone; Shovelnose Gold Property

01/09/23 Westhaven Drills 5.66 Metres of 6.83 g/t Gold and 1.90 Metres of 21.15 g/t Gold at the Skoonka Creek Gold Property

11/21/22 Westhaven Completes Its Inaugural Drill Program at Skoonka Creek Gold Property; Extends Vein Zone by 940 Metres

11/08/22 Westhaven Drills 25.00 Metres of 1.95 g/t Au and 5.61 g/t Silver, Including 6.61 Metres of 4.64 g/t Gold and 9.36 g/t Silver at the Shovelnose Gold Property

10/26/22 Westhaven Commences Drill Program At Skoonka Creek Gold Property

Key Financials January 2023 (CAD)

Share Price	\$0.40
Shares Outstanding	139M
Market Capitalization	~\$54M
Share Price: Year high-low	\$0.75 – \$0.33
Cash	8M *as of Dec 2022
Debt	Nil

Major Shareholders

Directors & Officers	23%
Retail Investors	38%
Institutions & Funds	29%
Friends & Family	10%

Share Price Performance



Contact: Sean Thompson

VP Corporate Development & IR

E: sthompson@westhavengold.com

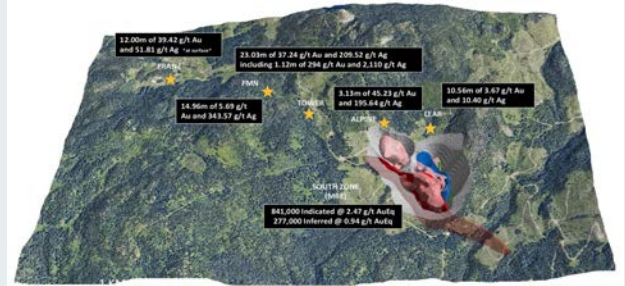
P: 1-604-681-5558 ext 104



The Shovelnose Project

Highlights:

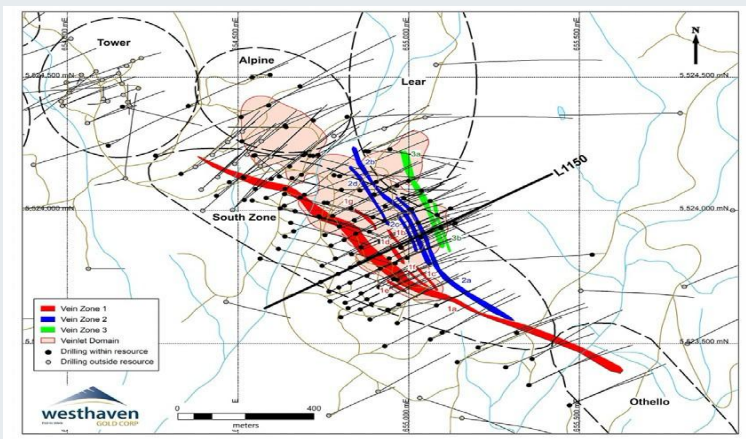
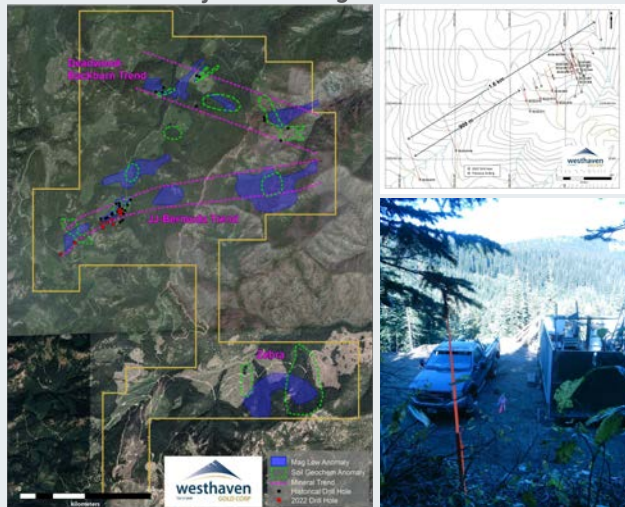
- SN18-14: 17.70m of 24.50 g/t Au and 107.92 g/t Ag
- SN18-15: 46.90m of 8.95 g/t Au and 65.47 g/t Ag
- SN19-01: 12.66m of 39.31 g/t Au and 133.11 g/t Ag
- SN19-10: 18.50m of 11.39 g/t Au and 40.21 g/t Ag (Vein Zone 2)
- SN19-15: 7.11m of 9.42 g/t Au and 69.36 g/t Ag (Vein Zone 3)
- **SN20-101: New Discovery (Franz Zone) 7.78m of 14.84 g/t Au and 39.40 g/t Ag at surface**
- **SN22-212: New Discovery & Highest Grade Intercept ever drilled on the property (FMN Zone) 23.04m of 37.24 g/t Au and 209.52 g/t Ag**
- Skoonka Creek Gold Property: SC22-005: 5.66m of 6.83 g/t Au and 4.60 g/t Ag, including 2.77m of 12.35 g/t Au and 7.75 g/t Ag, epithermal gold system extending over a strike length of 1.6km
- **2023: 12.00m of 39.42 g/t Au and 51.81 g/t Ag, including 6.20m of 73.51 g/t Au and 92.37 g/t Ag at surface at the Franz Zone**



Shovelnose South Zone Pit Constrained Mineral Resource Estimate @ 0.35 g/t AuEq Cut-off

Classification	Tonnes (k)	Au (g/t)	Contained Au (koz)	Ag (g/t)	Contained Ag (koz)	AuEq (g/t)	Contained AuEq (koz)
Indicated	10,592	2.32	791	11.43	3,894	2.47	841
Inferred	9,177	0.89	263	3.47	1,023	0.94	277

Skoonka Gold Project Drill Program



37,000 Hectares of 100% Owned Gold Properties

PROSPECT VALLEY GOLD (100%)	SNOONKA CREEK GOLD (100%)	SKOONKA NORTH (100%)
<ul style="list-style-type: none"> • 10,871ha - 30 km west of Merritt, BC • Hosts low-sulphidation epithermal style mineralization • Drilling highlights include: <ul style="list-style-type: none"> » 45.70m of 1.57 g/t Au including: 4.60m of 4.38g/t Au and 8.90m of 2.10g/t Au » 68.69m of 0.89g/t Au including: 32.64m of 1.32g/t Au and 7.53m of 2.93g/t Au 	<ul style="list-style-type: none"> • 2,783ha – 12km northeast of Lytton, BC • Best gold grades are in well developed epithermal quartz veins • Drilling highlights include: 5.66m of 6.83 g/t Au, including 2.77m of 12.35 g/t Au and 1.90m of 21.15 g/t Au • New intersections of quartz veining and gold mineralization at JJ West, combined with those at JJ suggest the presence of an epithermal system extending over a strike length of 1.6km. 	<ul style="list-style-type: none"> • 6,167ha (newly staked) • Highest gold slit samples on the SBGB, including: 594 ppb Au, 383.7 ppb Au, and 131.3 ppb Au • Never drilled

Upcoming Catalysts

- **2023 Expansion and Exploration Drill Program**
 - Focus on the "gap" from FMN towards Tower/MIK Zones:
 - 1 drill turning early 2023 from the FMN Zone (Highest grade gold-silver intercept ever drilled on the property. 23.03 metres of 37.24 g/t Au and 209.52 g/t Ag including 1.12 g/t Au and 2,110 g/t Ag) testing the +1km "gap" through the Tower/MIK Zones.
 - Drill test high priority targets / key structures off the main 4km trend on Shovelnose.
- Targeting new discoveries on 4 very large and underexplored properties / new gold belt.
 - Shovelnose Gold Property
 - Prospect Valley Gold Property
 - Skoonka Creek Gold Property
 - Skoonka North Gold Property

Highest grade gold-silver intercept ever drilled on the property – FMN Zone

